



Welcome to Weston Park Museum



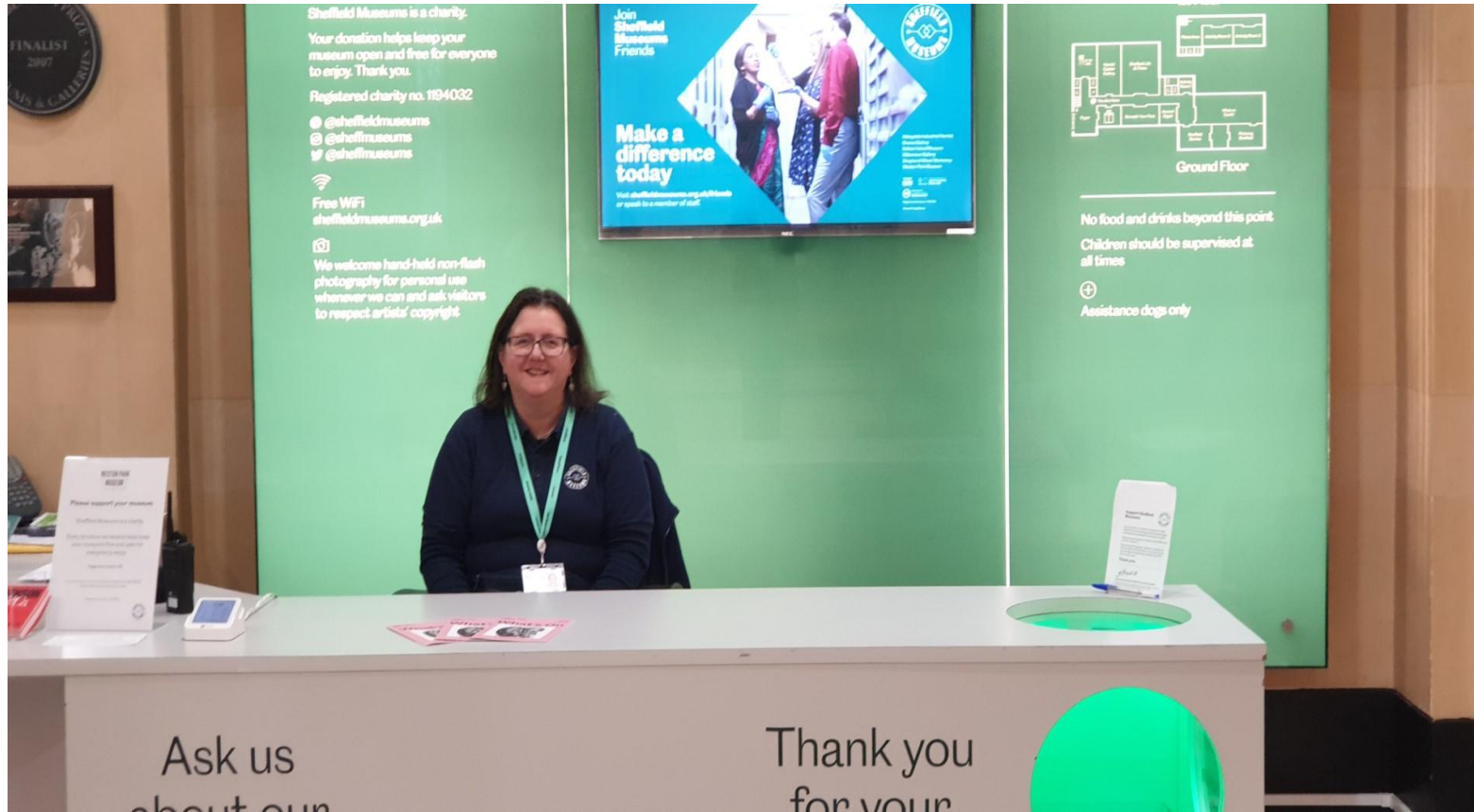


There are steps and a ramp up to the entrance.





This is the museum entrance.
It has large grey mats.



This is the welcome desk.
There will be a friendly person here.

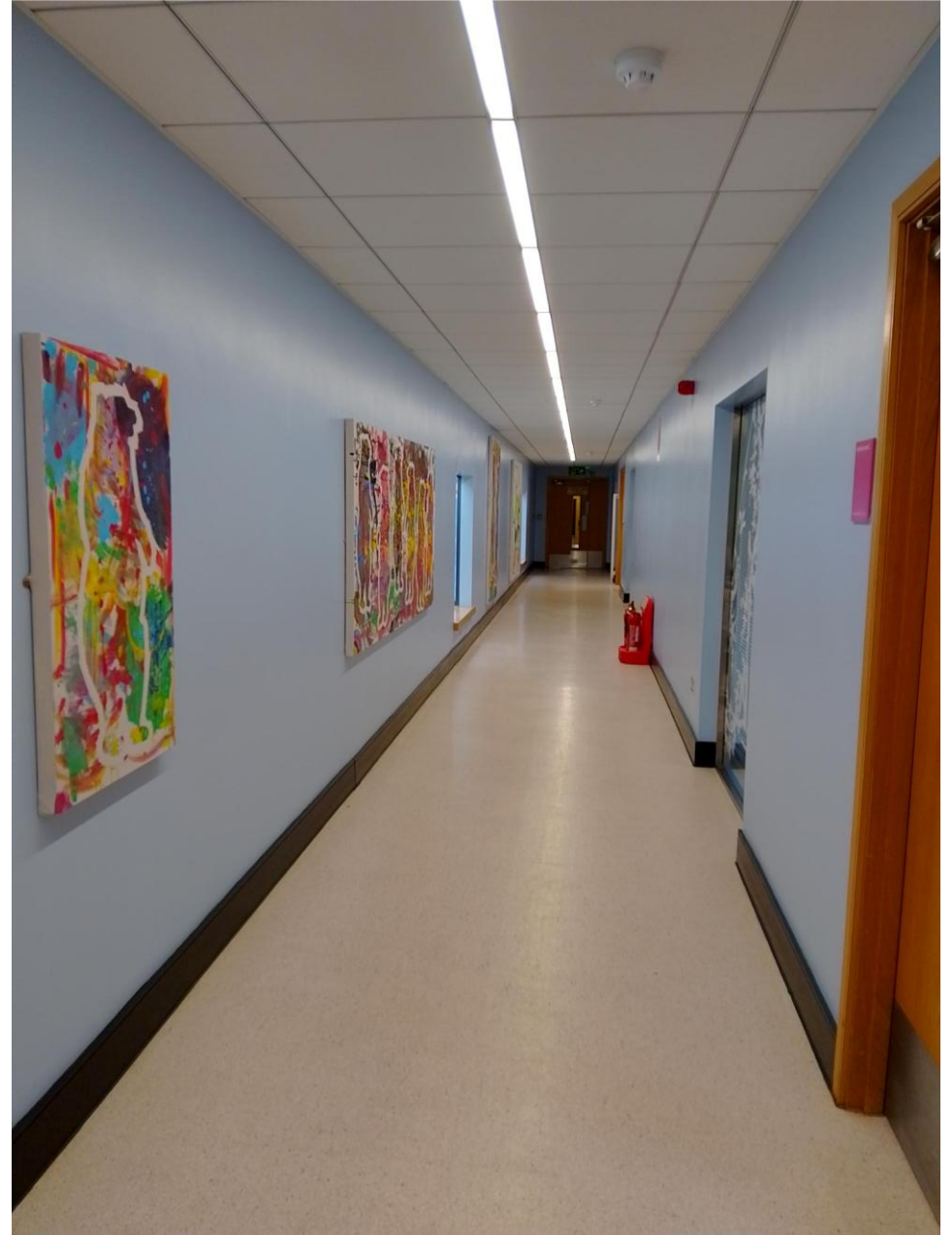
There is a lift and some stairs to go upstairs.





This is a space to eat and drink.

This is the corridor to activity rooms upstairs.



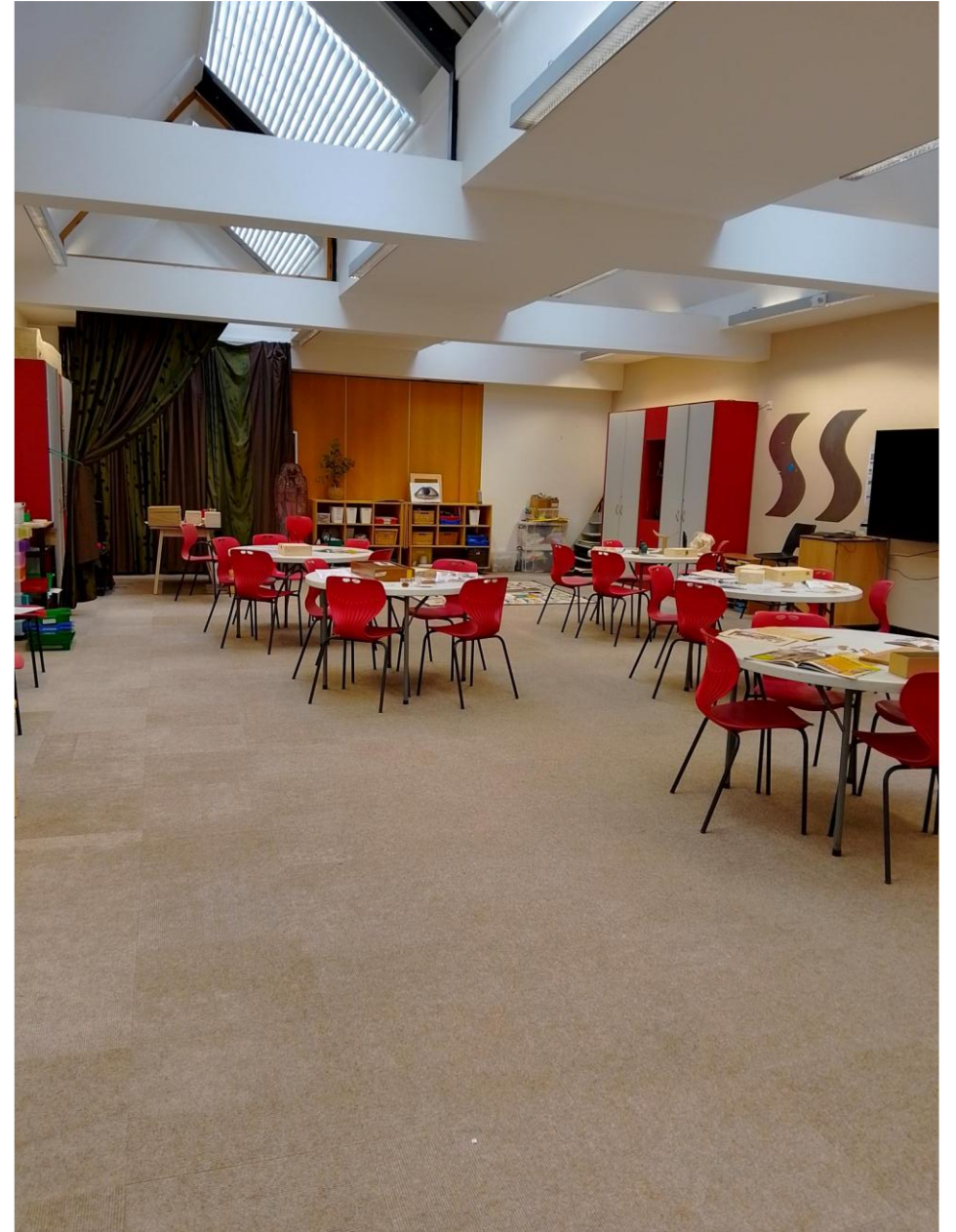
This is activity room 2.

It has windows on the ceiling that can make a noise.



This is activity room 3.

It has windows on the ceiling that can make a noise.

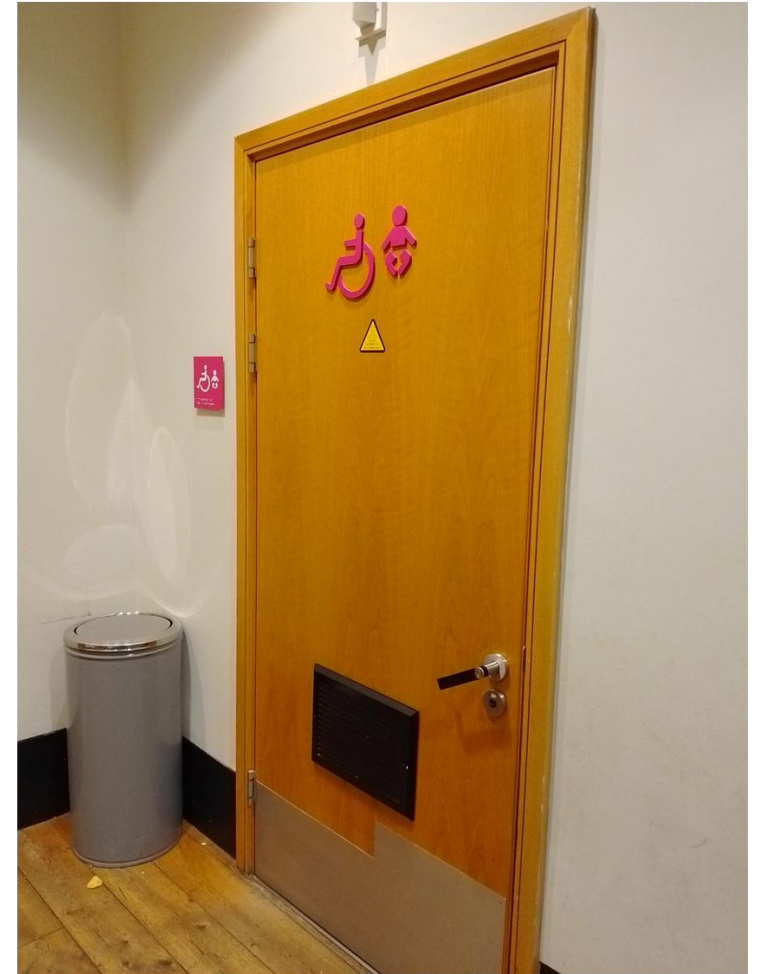




This is the main corridor of the museum.



There are more toilets.
There is also an activity room.



These are the toilets.

This is activity room 1.
It is downstairs.





There are things that you can touch and play with.



There are lots of stuffed animals to see.

There are insects in drawers.

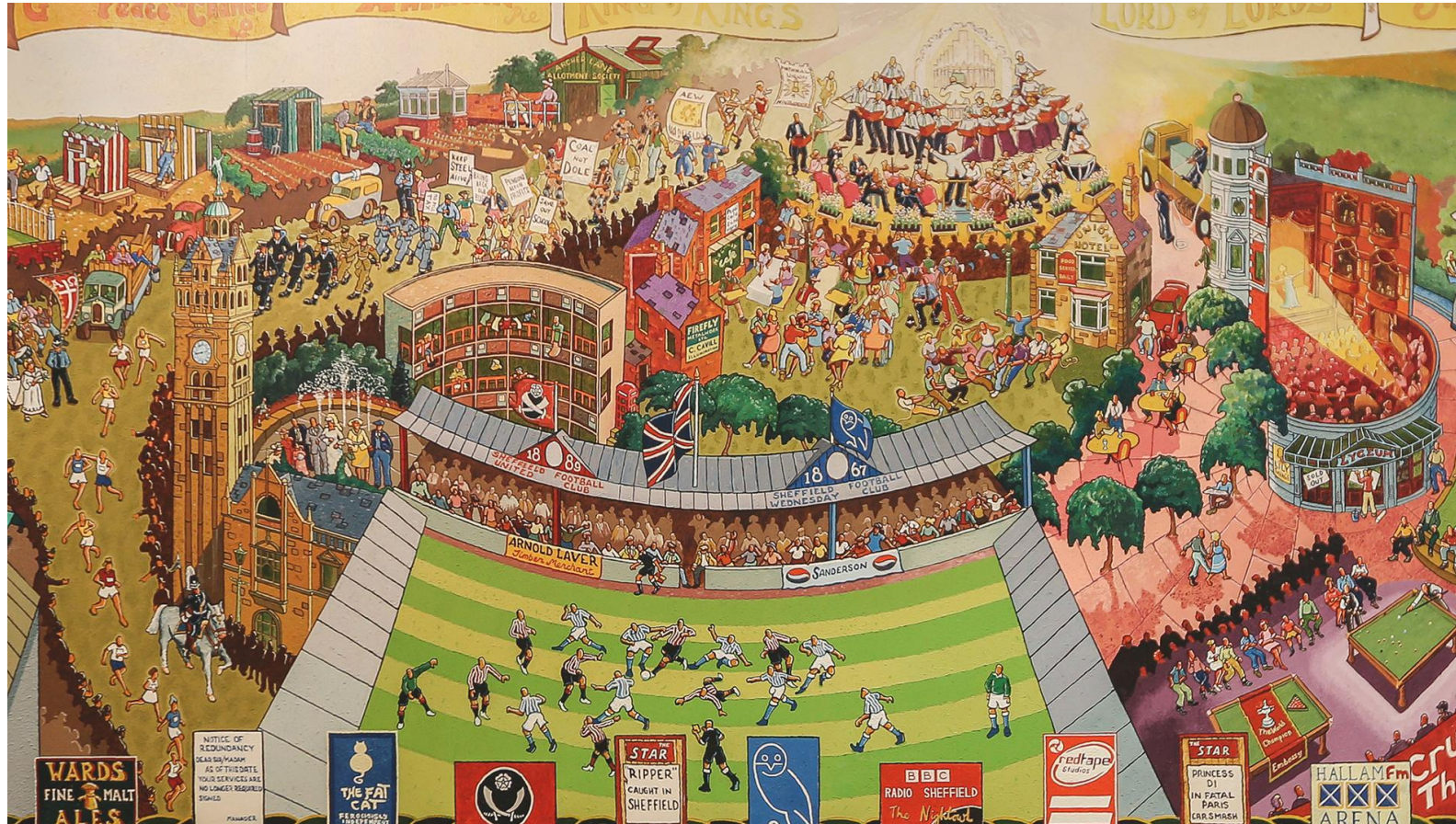
None of these will hurt you.

Some areas are dark. You don't have to go into the dark areas.



Some objects cannot be touched.
These objects are usually in cases.

We hope you enjoy your visit to Weston Park Museum



Joe Scarborough, Sheffield Through the Ages (detail), 2006
© www.joescarboroughart.co.uk