



Welcome to Weston Park Museum



It is free to enter. You will not need a ticket.



Slide not on
children's
version

Weston Park Museum is in Weston Park.
The park entrance by a busy road.
There is a cobbled path.
Up to 2 minibuses with blue badges can park in the park with prior permission.



This is the main entrance to the museum.

It may look like this when you visit.

The doors do not open until 10am.

If you need to speak to a member of museum staff urgently please press the buzzer by the door.

There are steps and a ramp up to the entrance.





Slide not on
children's
version

There is also an entrance through the museum café, Ambulo.

If your workshop is on a Monday the café will be closed.



This is the museum foyer.

It has a grey floor tiles that are slightly shiny but is not slippery. It has large grey mats.

It may look a little different to this when you visit and sometimes it can be very busy and noisy.

If your workshop is on a Monday the shop and cafe will not be available.



There is a welcome desk.

There will be a friendly staff member here to welcome you and answer any questions.

Teachers, please sign in your class at the desk.

There is a donations box. As you are doing a paid workshop do not feel that you have to donate, unless you wish to.



Slide not on
children's version

There are large benches for visitors to use in the foyer.
There are also lockers which require a refundable £1 coin or trolley token.
Pushchairs are often left in this area.

By the reception desk are male, female and accessible toilets.

There are also baby changing facilities.

Image not on children's version



Next to the reception desk is a visitor lift and stairs. You can use them to get to the picnic area and activity rooms upstairs.





This is the picnic area. It is on the first floor but is accessible by lift. You can use this space to eat and drink.

It has beige vinyl floor that is not shiny or slippery.

It is used by school groups and families.

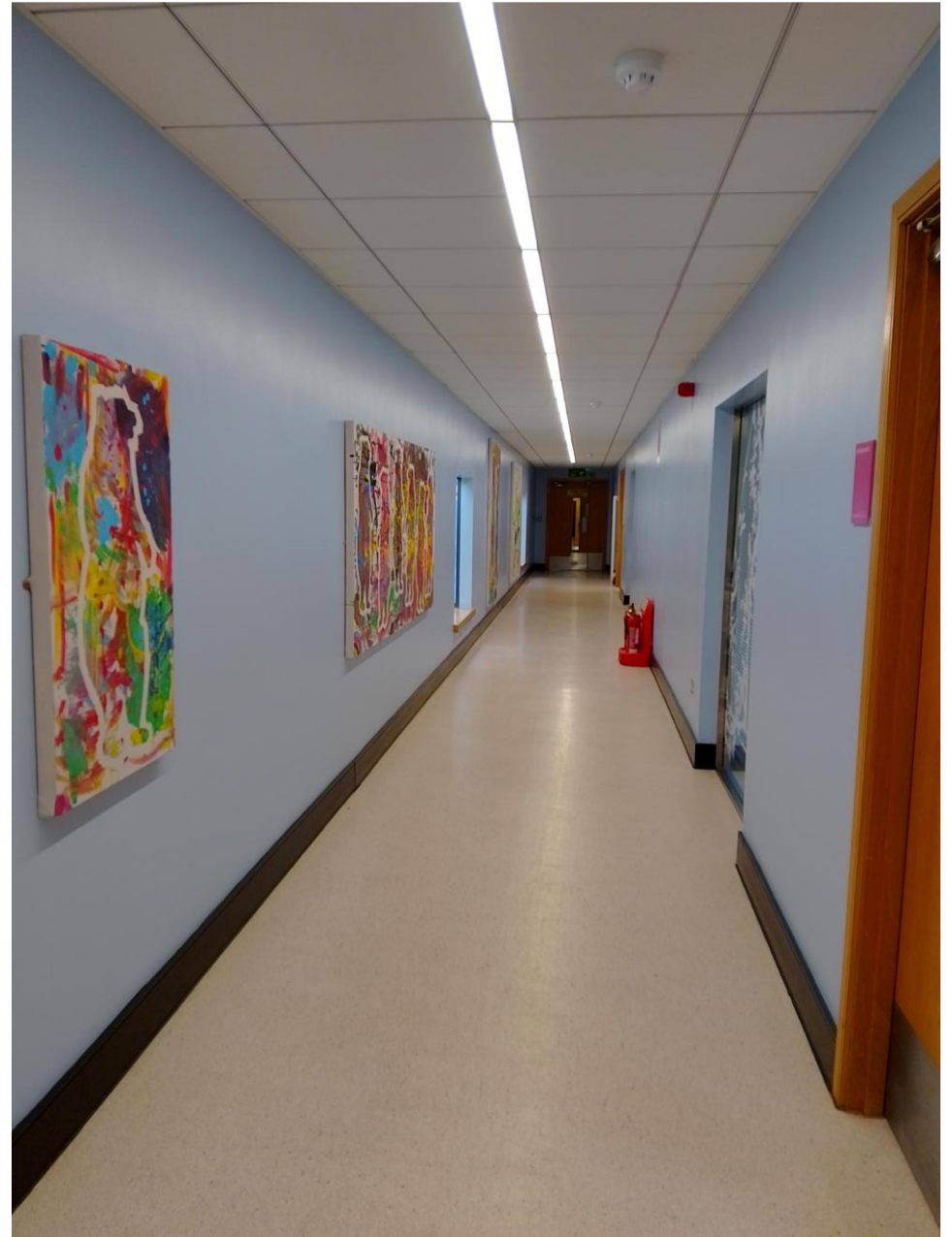
It can get very noisy.

You can enjoy your food and drink in the foyer downstairs if it is unavailable.

This is the corridor to activity room 2 and 3. It is upstairs.

The vinyl floor looks shiny under the light, but it is not slippery.

It can be loud and echoey.



This is activity room 2. It is the first room along the corridor.

It has a blue vinyl floor that is not shiny or slippery.

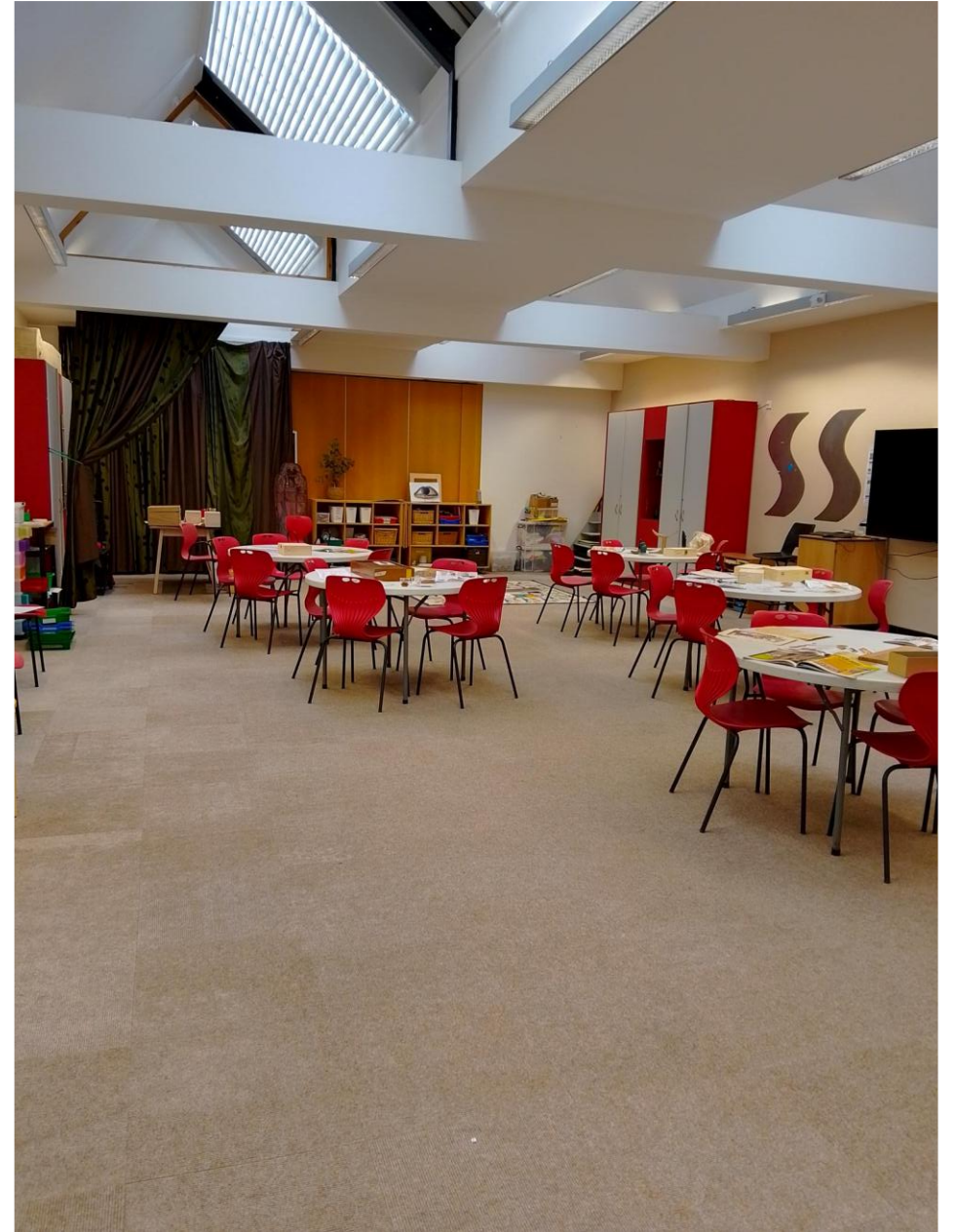
It has windows on the ceiling that can make a noise when being opened and closed.



This is activity room 3. It is at the end of the corridor.

It has a carpet tile floor.

It has windows on the ceiling that can make a noise when being opened and closed.



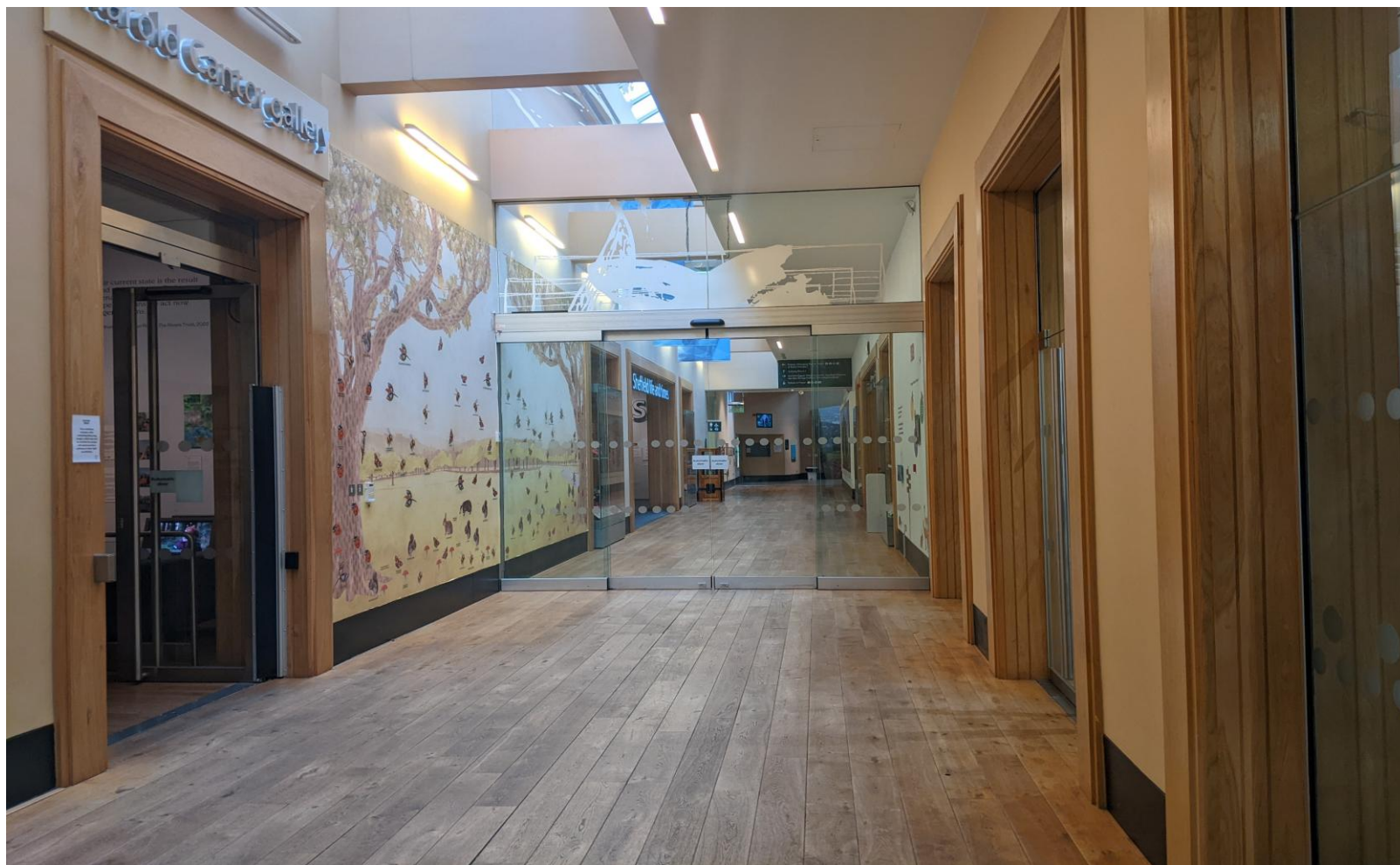
Slide not on
children's
version

This area is between the activity rooms. It has 6 sinks. 2 of the sinks are low and easier to reach.

Sometimes wheelchair access to the sinks may be blocked. Please just ask staff for help.

The floor is vinyl. It is not shiny or slippery, but it may be wet.



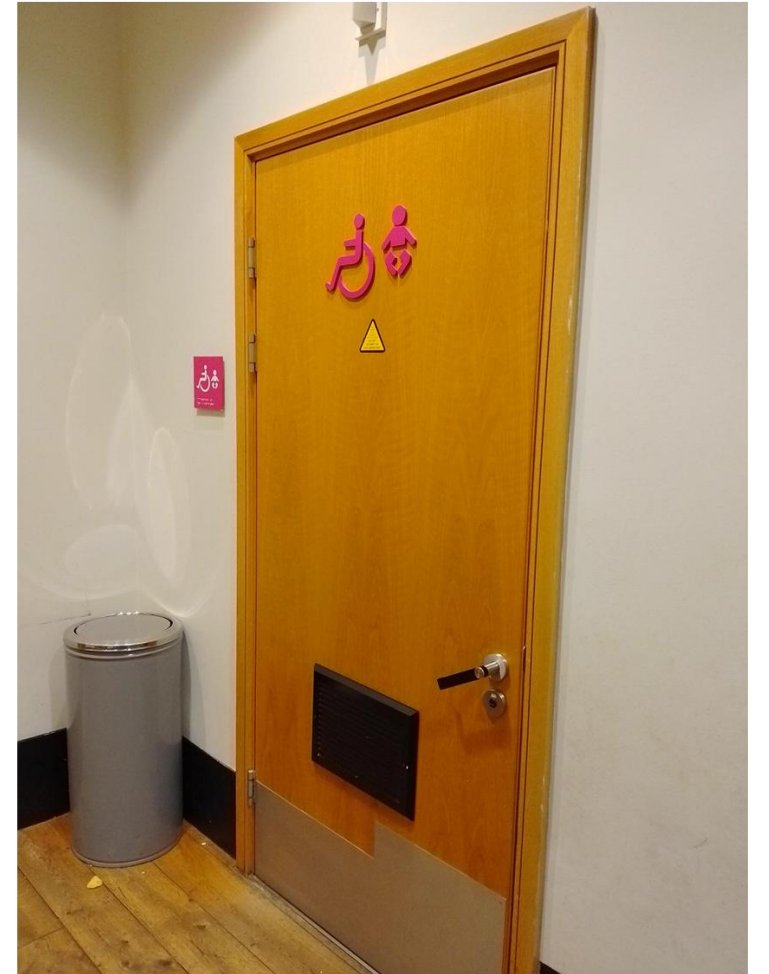
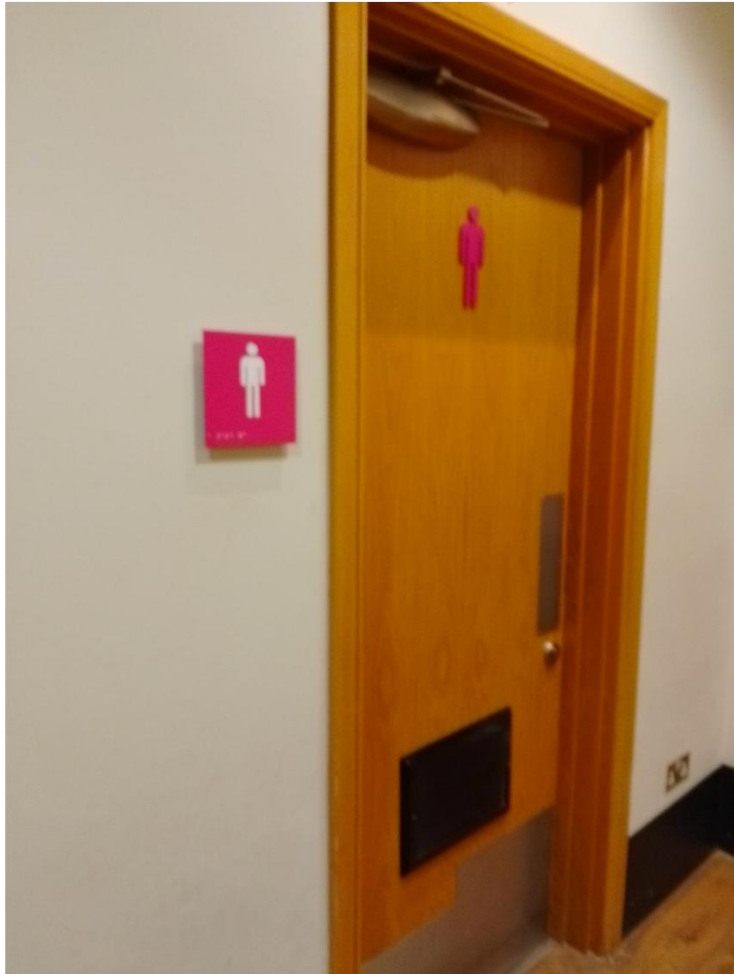


This is the main corridor of the museum. The floor is wooden. It is not shiny. There are eight galleries about different subjects. Some will change regularly. Some galleries have carpet floors. Some galleries have wooden floors. It has glass doors. The doors open and close automatically.



At the end of the corridor there are accessible toilets, a Changing Places toilet and baby changing facilities.

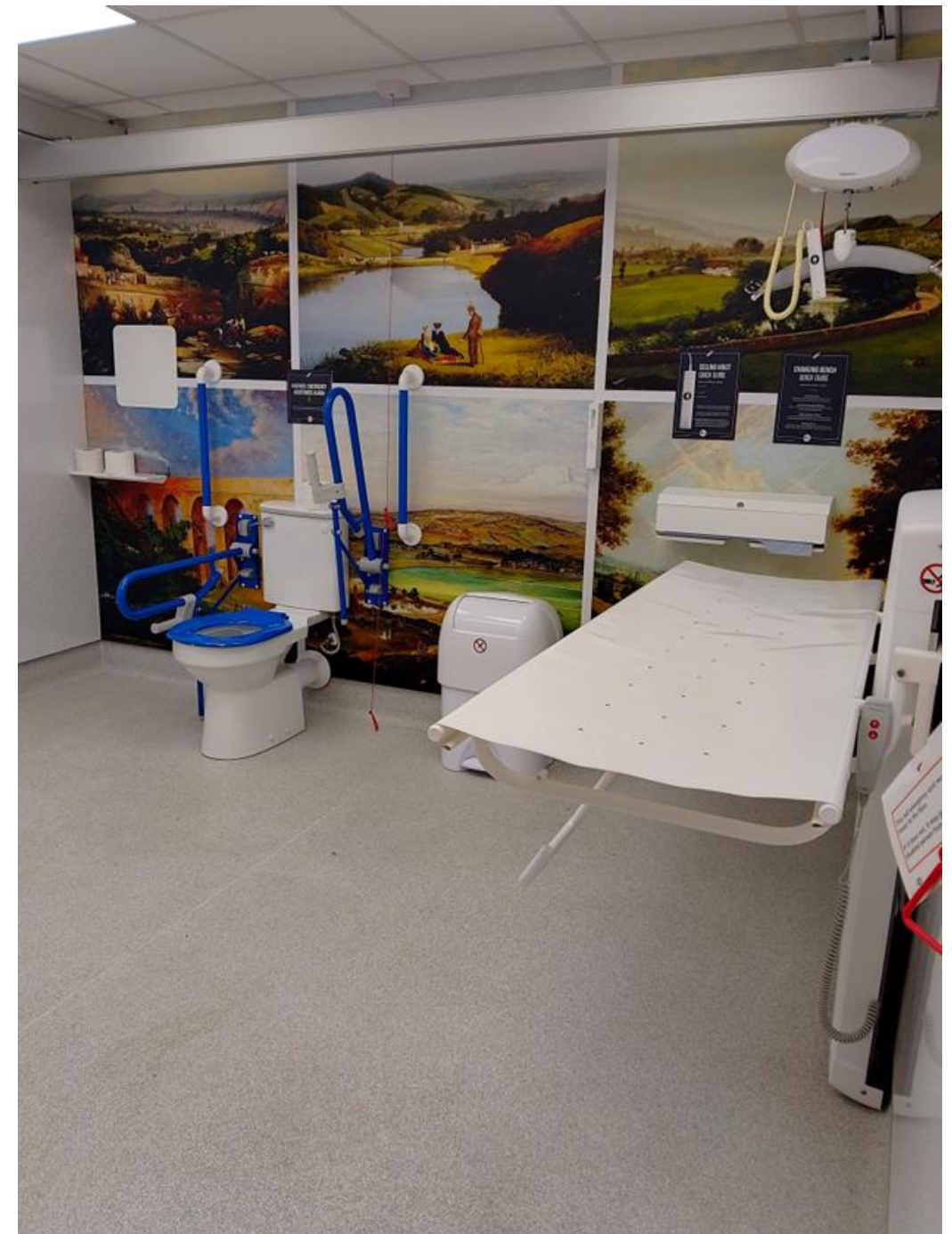
There is also an activity room.



These are the toilets.

Slide not on
children's
version

There is a Changing Places toilet.
Ask at Reception for the key.



This is activity room 1. It is downstairs at the end of the main corridor.

It has a vinyl floor that is not shiny or slippery.

It has a sink.





There are many things in the gallery spaces that you can touch and play with. The spaces are often noisy and busy with families and schools.



What On Earth is a natural history gallery.

There are lots of stuffed animals to see.

There are insects in drawers.

None of these will hurt you.

Some areas are dark. You don't have to go into the dark areas.



There are some objects in the museum which you are not allowed to touch. These objects are usually in cases.

You can ask questions if you would like to find out more. There will be friendly staff who can help.

We hope you enjoy your visit to Weston Park Museum



Joe Scarborough, *Sheffield Through the Ages* (detail), 2006 © www.joescarboroughart.co.uk

Please get in touch if you'd like any more information about the museum.

learning@sheffieldmuseums.org.uk